

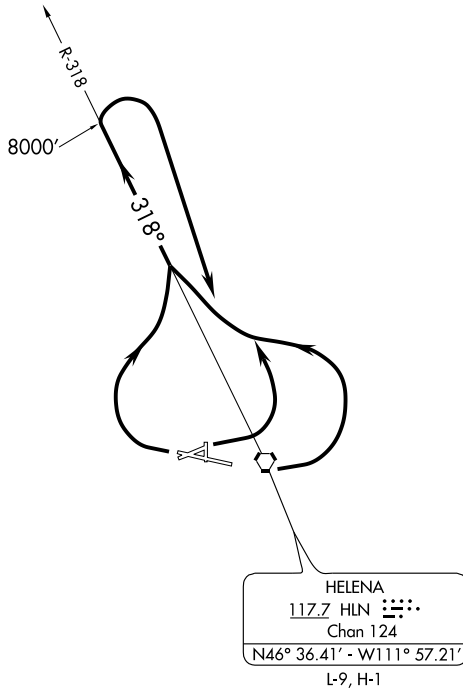
(HLN2.HLN) 03135

# HELENA TWO DEPARTURE

SL-192 (FAA)

HELENA REGIONAL (HLN)  
HELENA, MONTANA

ATIS 120.4  
GND CON  
121.9  
HELENA TOWER\*  
118.3 (CTAF) 257.8  
HELENA DEP CON  
119.5 229.4



NOTE: Chart not to scale.

## DEPARTURE ROUTE DESCRIPTION

TAKE-OFF RUNWAYS 5 and 9: Turn left, continue climb northwest bound via HLN VORTAC R-318 to 8000' then climbing right turn direct HLN VORTAC.

TAKE-OFF RUNWAY 27: Turn right, continue climb northwest bound via HLN VORTAC R-318 to 8000'; then climbing right turn direct HLN VORTAC.

HELENA TWO DEPARTURE  
(HLN2.HLN) 03135

HELENA, MONTANA  
HELENA REGIONAL (HLN)

NW-1,20 JAN 2005

NW-1,20 JAN 2005