

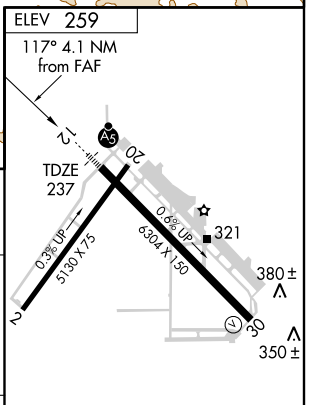
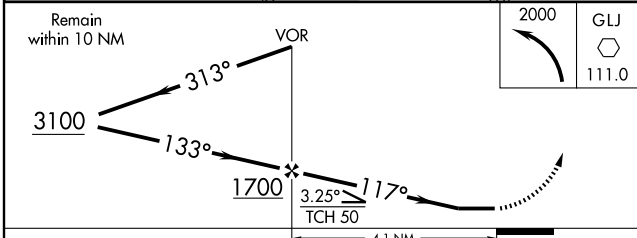
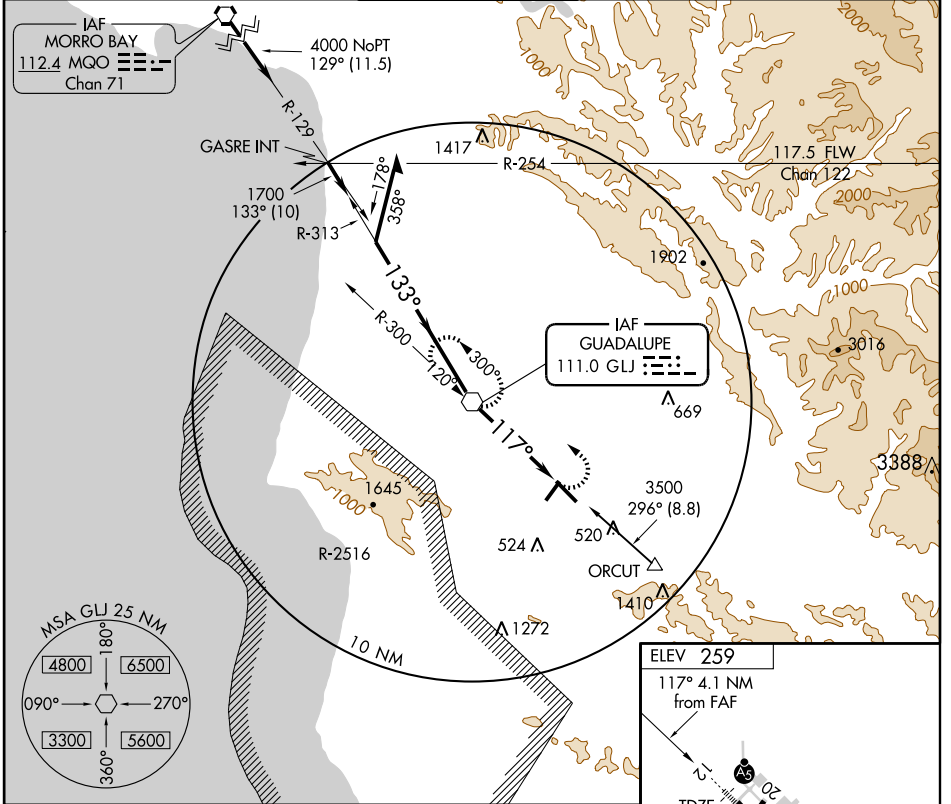
VOR RWY 12

VOR GLJ 111.0	APP CRS 117°	Rwy Idg TDZE Apt Elev	6304 237 259
-------------------------	------------------------	-----------------------------	---

SANTA MARIA PUBLIC/CAPTAIN G. ALLAN HANCOCK FIELD (SMX)

		MISSED APPROACH: Climbing left turn to 2000 direct GLJ VOR and hold.		
		ATIS 121.15	LOS ANGELES CENTER 119.05 269.5	SANTA MARIA TOWER * 118.3 (CTAF) 289.6

ATIS 121.15	LOS ANGELES CENTER 119.05 269.5	SANTA MARIA TOWER * 118.3 (CTAF) 289.6	GND CON 121.9	UNICOM 122.95
-----------------------	---	--	-------------------------	-------------------------



CATEGORY	A	B	C	D
S-12	680/24 443 (500-1/2)		680/40 443 (500-3/4)	680/50 443 (500-1)
CIRCLING	820-1 561 (600-1)		860-1 3/4 601 (700-1-3/4)	1320-3 1061 (1100-3)

HIRL Rwy 12-30				
FAF to MAP 4.1 NM				
Knots	60	90	120	150 180
Min:Sec	4:06	2:44	2:03	1:38 1:22

VOR RWY 12

SW-3,20 JAN 2005

SW-3,20 JAN 2005