

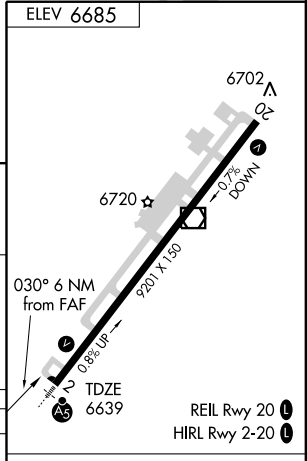
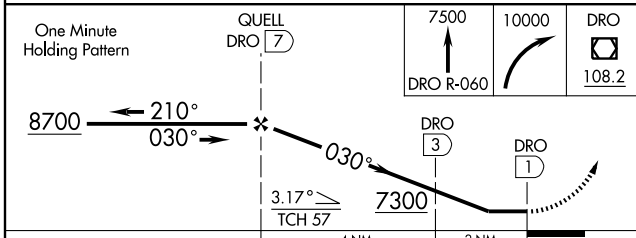
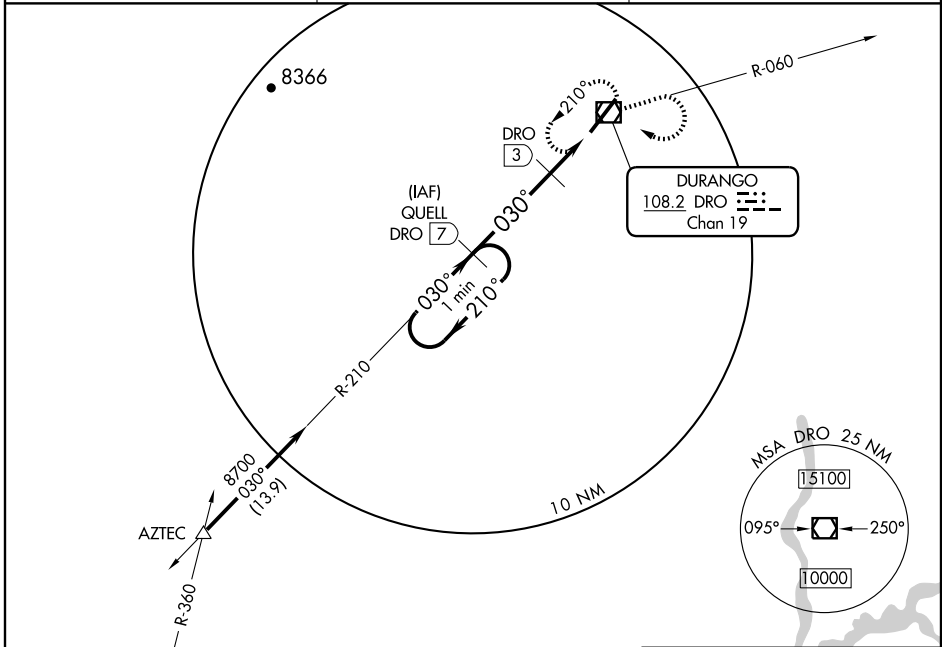
VOR/DME DRO	APP CRS	Rwy Idg	9201
108.2	030°	TDZE	6639
Chan 19		Apt Elev	6685

VOR/DME RWY 2

DURANGO-LA PLATA COUNTY (DRO)

<p>▼ Cat. D S-2 visibility increased ¼ mile for inoperative MALSRS.</p> <p>▲ MALSRS</p>	<p>MISSED APPROACH: Climb on R-060 to 7500, then climbing right turn to 10,000 direct DRO VOR/DME and hold.</p>
---	---

<p>ASOS</p> <p>120.625</p>	<p>DENVER CENTER</p> <p>118.575 348.7</p>	<p>UNICOM</p> <p>122.8 (CTAF)</p>
-----------------------------------	--	--



CATEGORY	A	B	C	D
S-2		7020-½ 381 (400-½)		7020-1 381 (400-1)
CIRCLING	7180-1 495 (500-1)	7200-1 515 (600-1)	7200-1½ 515 (600-1½)	7260-2 575 (600-2)

Knots	60	90	120	150	180
Min:Sec					

SW-1,20 JAN 2005

SW-1,20 JAN 2005