

GOODLAND, KANSAS

AL-684 (FAA)

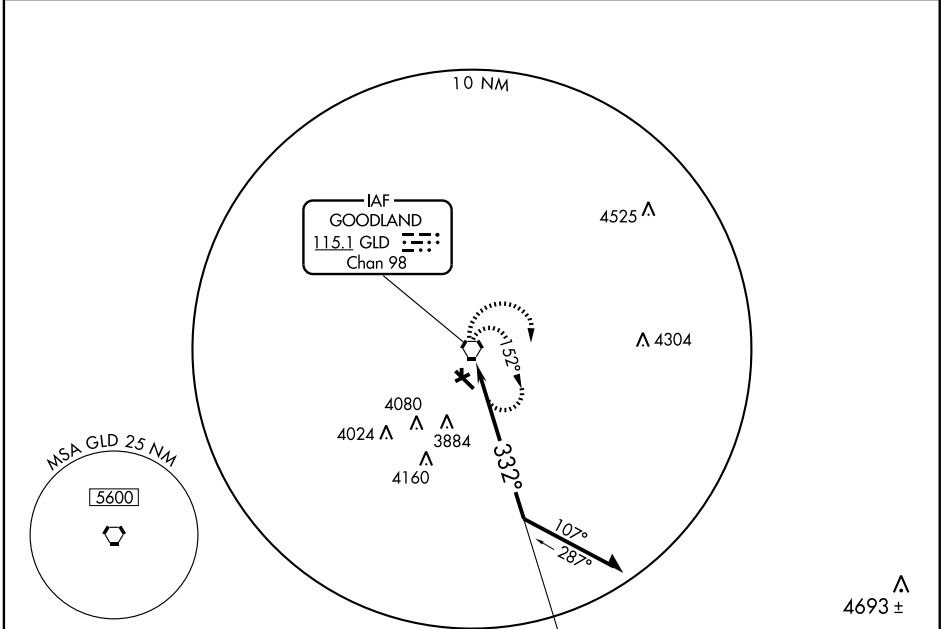
VORTAC GLD 115.1 Chan 98	APP CRS 332°	Rwy Idg 5499 TDZE 3652 Apt Elev 3656
--	------------------------	---

VOR RWY 30

GOODLAND/RENNER FIELD/GOODLAND MUNI (GLD)

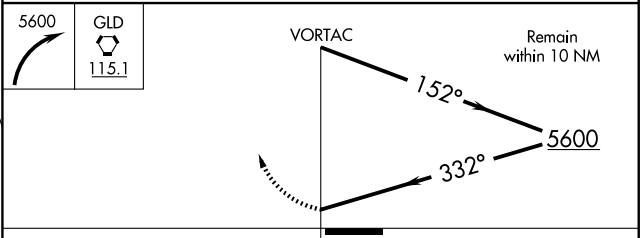
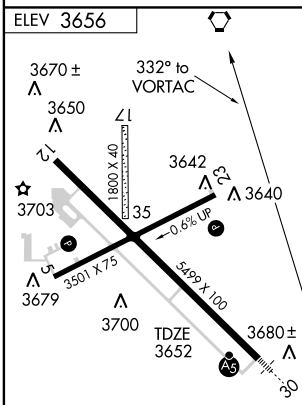
Circling not authorized south of runways 5 and 30.	MALSR	MISSED APPROACH: Climbing right turn to 5600 in GLD VORTAC holding pattern.
--	-------	---

ASOS 121.025	DENVER CENTER 132.5 379.15	UNICOM 122.95 (CTAF)
------------------------	--------------------------------------	--------------------------------



NC-2, 05 JUL 2007 to 02 AUG 2007

NC-2, 05 JUL 2007 to 02 AUG 2007



	REIL Rwy 12	MIRL Rwy 5-23 and 12-30			
Knots	60	90	120	150	180
Min:Sec					
CATEGORY	A	B	C	D	
S-30	4160-½ 508 (600-½)		NA		
CIRCLING	4160-1 504 (600-1)		NA		

GOODLAND, KANSAS
Amdt 8 07186

GOODLAND/RENNER FIELD/GOODLAND MUNI (GLD)
39° 22' N-101° 42' W

VOR RWY 30