

SANTA ROSA, CALIFORNIA

AL-696 (FAA)

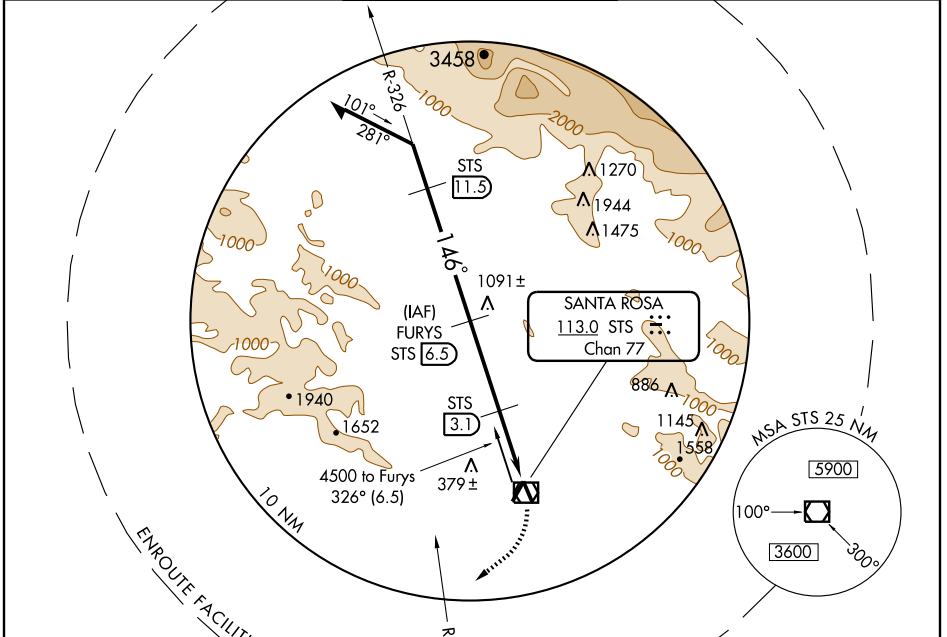
VOR/DME STS 113.0 Chan 77	APP CRS 146°	Rwy Idg TDZE 119 Apt Elev 125	5115
--	------------------------	---	-------------

VOR/DME RWY 14

SANTA ROSA/ CHARLES M. SCHULZ-SONOMA COUNTY (STS)

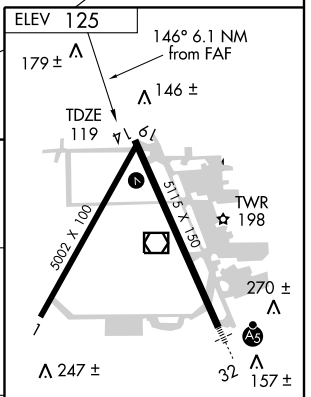
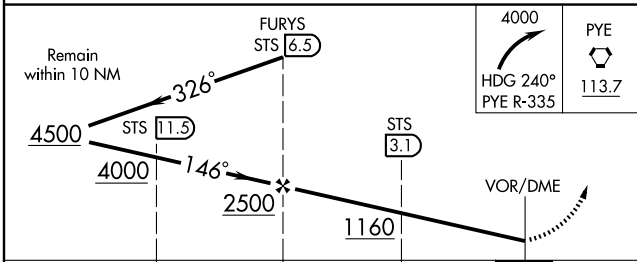
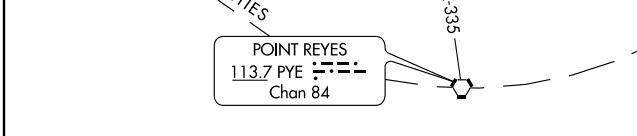
⚠ When local altimeter not received, procedure not authorized. MISSED APPROACH: Climbing right turn to 4000 via heading 240° and PYE R-335 to PYE VORTAC.

ATIS 120.55	NORCAL APP CON 124.325 288.3	SANTA ROSA TOWER★ 118.5 (CTAF) 363.0	GND CON 121.9	UNICOM 122.95
-----------------------	--	--	-------------------------	-------------------------



SW-2,20 JAN 2005

SW-2,20 JAN 2005



CATEGORY	A	B	C	D
S-14	640-1 521 (600-1)		640-1½ 521 (600-1½)	640-1¾ 521 (600-1¾)
CIRCLING	640-1 515 (600-1)	680-1 555 (600-1)	740-1¾ 615 (700-1¾)	740-2 615 (700-2)

REIL Rwy 14	60	90	120	150	180
HIRL Rwy 14-32					
Knots	60	90	120	150	180
Min:Sec					

SANTA ROSA, CALIFORNIA
Amdt 2 04106

SANTA ROSA/ CHARLES M. SCHULZ-SONOMA COUNTY (STS)
38°31'N-122°49'W

VOR/DME RWY 14