

GILLETTE, WYOMING

AL-5728 (FAA)

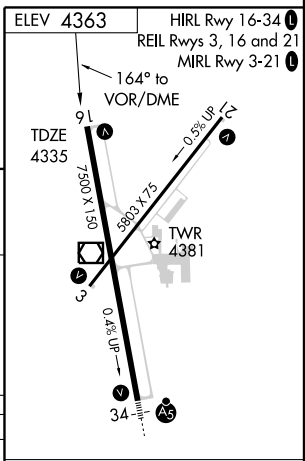
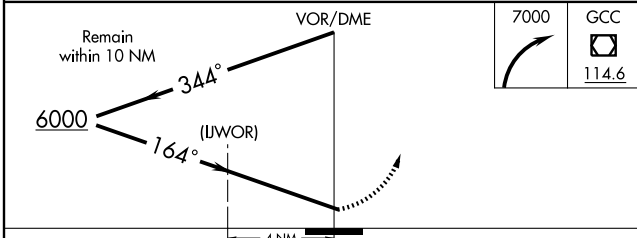
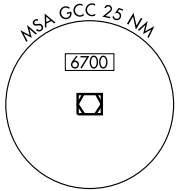
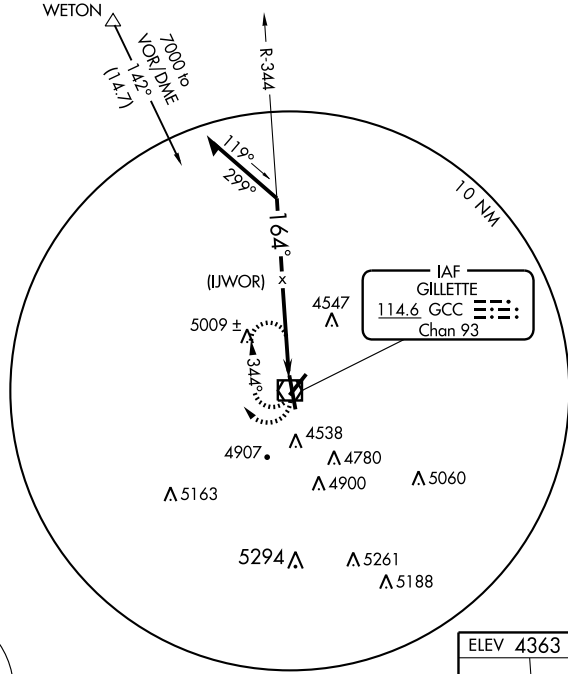
VOR or GPS RWY 16

GILLETTE-CAMPBELL COUNTY (GCC)

VOR/DME GCC 114.6 Chan 93	APP CRS 164°	Rwy ldg 7500	TDZE 4335	Apt Elev 4363
--	------------------------	-----------------	--------------	------------------

MISSED APPROACH: Climbing right turn to 7000 in GCC VOR/DME holding pattern.

ASOS 124.175	DENVER CENTER 135.6 385.6	GILLETTE TOWER * 118.5 (CTAF) 0	GND CON 121.7	UNICOM 122.95
------------------------	-------------------------------------	--	-------------------------	-------------------------



CATEGORY	A	B	C	D
S-16	5020-1 685 (700-1)	685 (700-1)	5020-2 685 (700-2)	5020-2½ 685 (700-2½)
CIRCLING	5020-1 657 (700-1)	5040-1 677 (700-1)	5160-2½ 797 (800-2½)	5260-3 897 (900-3)

Knots	60	90	120	150	180
Min:Sec					

GILLETTE, WYOMING
Amdt 6C 03135

44°21'N-105°32'W

GILLETTE-CAMPBELL COUNTY (GCC)

VOR or GPS RWY 16

NW-1,20 JAN 2005

NW-1,20 JAN 2005