

SEDONA, ARIZONA

AL-6169 (FAA)

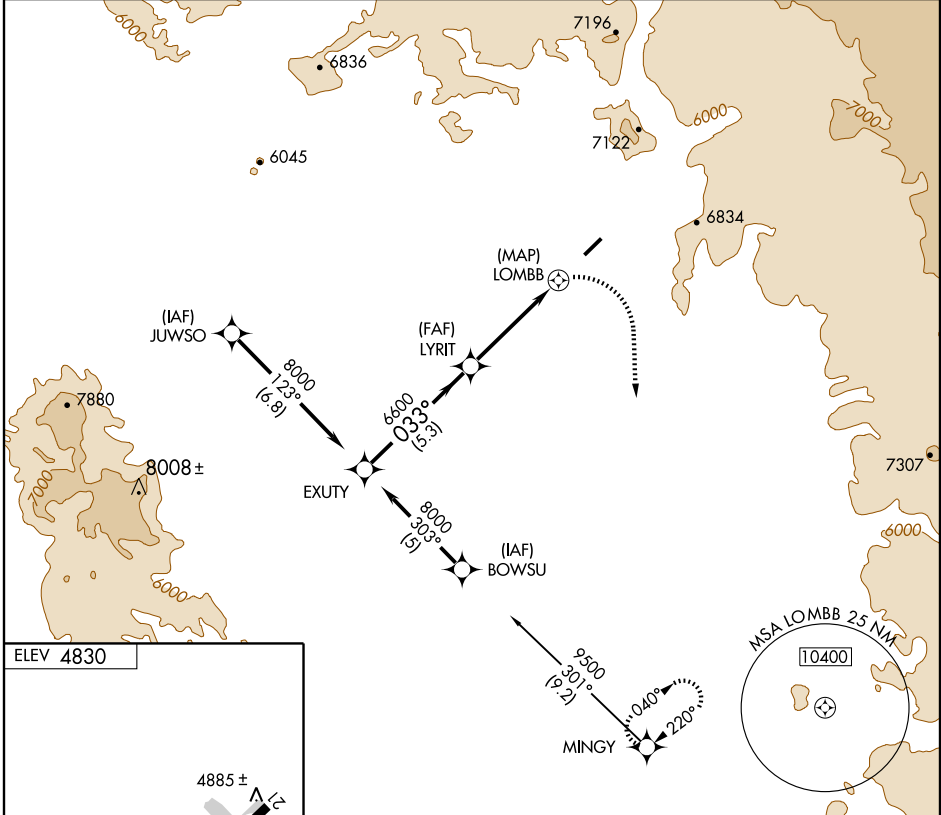
GPS RWY 3 SEDONA (SEZ)

APP CRS 033°	Rwy Idg 5132
	TDZE 4792
	Apt Elev 4830

▼ When local altimeter not received, procedure not authorized.
▲ NA Cat D circling not authorized northwest of Rwy 3-21.

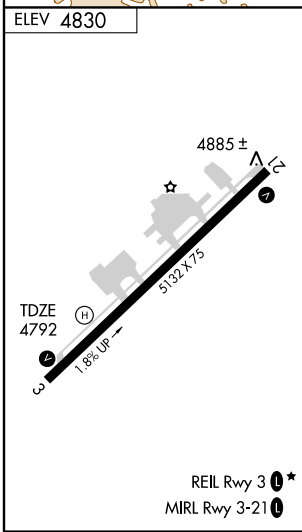
MISSED APPROACH: Climbing right turn to 12000 direct MINGY WP and hold.

AWOS-2 118.525	PRESCOTT RADIO 122.3	UNICOM 123.0 (CTAF) 0
--------------------------	--------------------------------	---------------------------------



SW-4,20 JAN 2005

SW-4,20 JAN 2005



EXUTY 8000 Procedure Turn NA LYRIT 6600 LOMBB MINGY 12000 3.00° TCH 50 5.3 NM 4.4 NM 1.3 NM	033° 3.00° 220°		12000 MINGY
	CATEGORY S-3 CIRCLING	A 6140-1½ 1348 (1400-1½) 6140-1½ 1310 (1400-1½)	B 6240-1½ 1448 (1500-1½) 6240-1½ 1410 (1500-1½)

SEDONA, ARIZONA
Orig 04106

34°51'N-111°47'W

SEDONA (SEZ) GPS RWY 3