

VOR/DME TNU 112.5 Chan 72	APP CRS 236°	Rwy Idg TDZE Apt Elev	9003 939 957
---	------------------------	-----------------------------	---

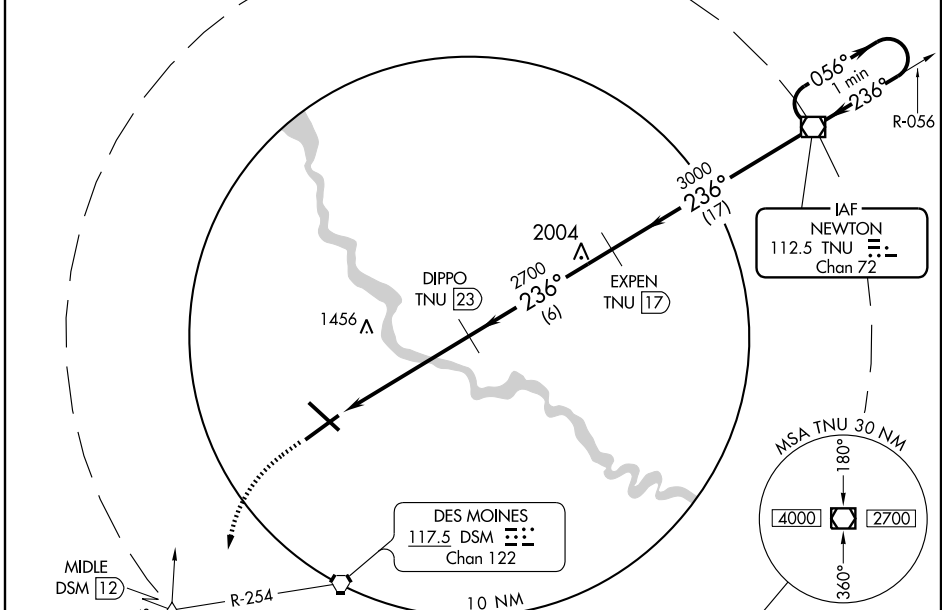
VOR/DME RWY 23

DES MOINES INTL (DSM)

▼ When VGSI inoperative, procedure NA at night.
▲ MISSED APPROACH: Climb to 2000, then climbing left turn to 3000 via heading 200° and DSM VORTAC R-254 to MIDDLE Int/DSM 12 DME and hold.

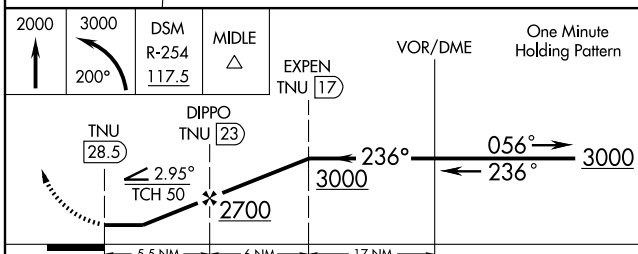
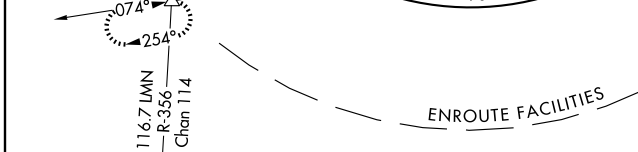
ATIS 119.55 251.05	DES MOINES APP CON 135.2 360.7	DES MOINES TOWER 118.3 257.8	GND CON 121.9 348.6	CLNC DEL 134.15 317.55
------------------------------	--	--	-------------------------------	----------------------------------

NoPT for arrivals on TNU VOR/DME airway radials 031 clockwise to 081.

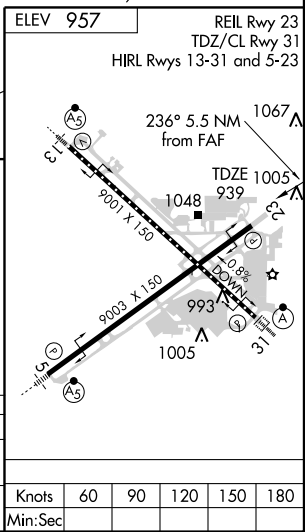


NC-3,20 JAN 2005

NC-3,20 JAN 2005



CATEGORY	A	B	C	D
S-23	1720-1 781 (800-1)	1720-1¼ 781 (800-1¼)	1720-2¼ 781 (800-2¼)	1720-2½ 781 (800-2½)
CIRCLING	1720-1 763 (800-1)	1720-1¼ 763 (800-1¼)	1720-2¼ 763 (800-2¼)	1720-2½ 763 (800-2½)



Knots	60	90	120	150	180
Min:Sec					