

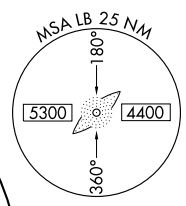
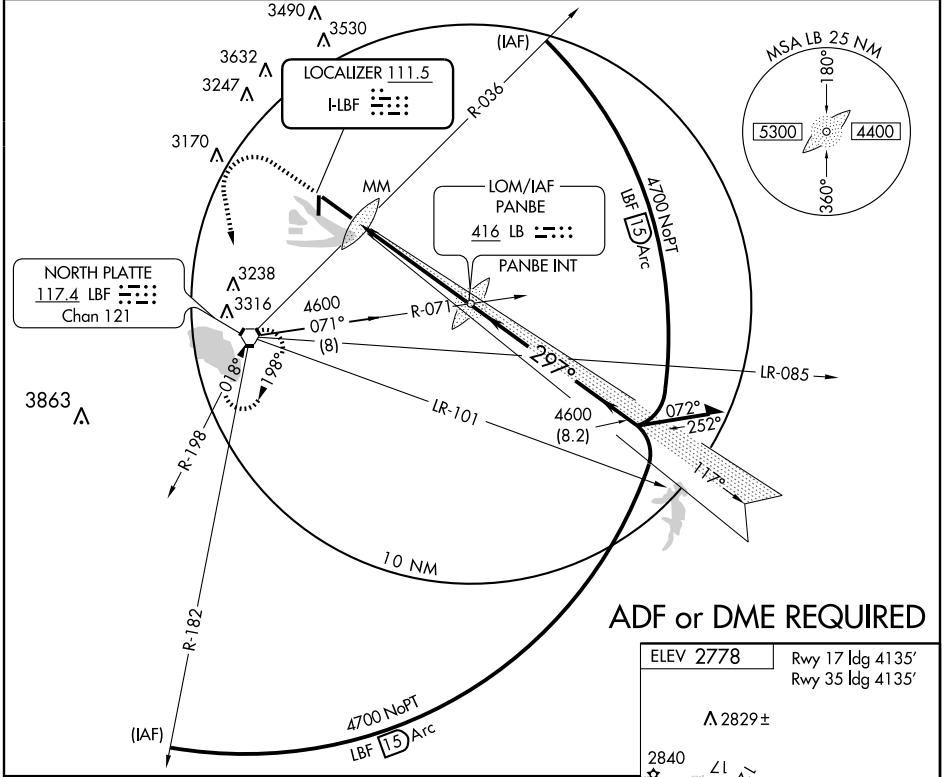
ILS RWY 30

NORTH PLATTE REGIONAL AIRPORT LEE BIRD FIELD (LBF)

LOC I-LBF 111.5	APP CRS 297°	Rwy ldg 8000	TDZE 2770	Apt Elev 2778
---------------------------	------------------------	------------------------	---------------------	-------------------------

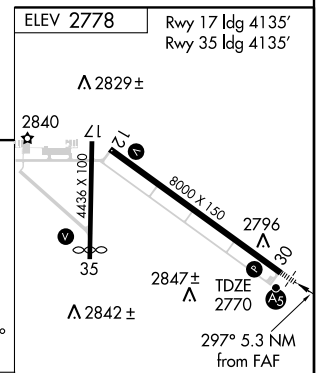
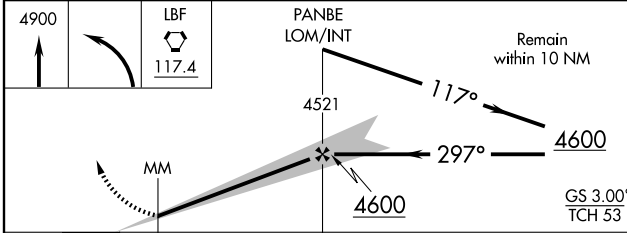
	MALSR 	MISSED APPROACH: Climb to 4900 then left turn direct LBF VORTAC and hold.
--	-----------	---

ASOS 118.425	DENVER CENTER 132.7 397.85	CLNC DEL 132.7	UNICOM 123.0 (CTAF) 0
------------------------	--------------------------------------	--------------------------	---------------------------------



NC-2,20 JAN 2005

NC-2,20 JAN 2005



CATEGORY	A	B	C	D
S-ILS 30	2970-1/2 200 (200-1/2)			
S-LOC 30	3200-1/2 430 (500-1/2)	3200-3/4 430 (500-3/4)	3200-1 430 (500-1)	3200-1 430 (500-1)
CIRCLING	3340-1 562 (600-1)	3340-1 1/2 562 (600-1 1/2)	3360-2 582 (600-2)	3360-2 582 (600-2)

HIRL Rwy 12-30 0					
REIL Rwy 35 0					
MIRL Rwy 17-35 0					
FAF to MAP 5.3 NM					
Knots	60	90	120	150	180
Min:Sec	5:18	3:32	2:39	2:07	1:46